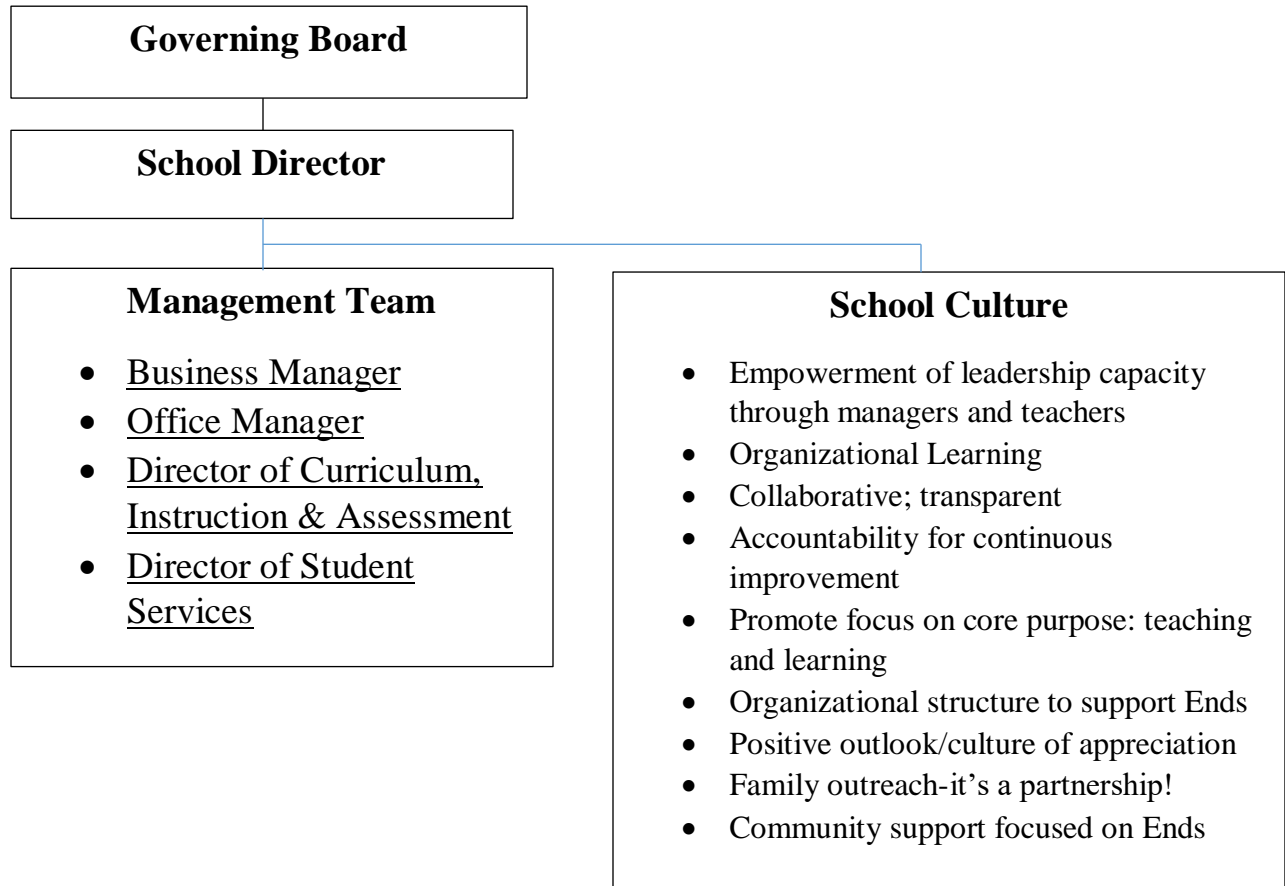


Leadership Framework

Laupāhoehoe Community Public Charter School



The School Director serves as the school administrator/leader who is accountable to the Governing Board for the actions of all employees within the framework of policy governance. To support academic and behavioral outcomes, the School Director must transform the school culture, manage stakeholder expectations, attend to the day-to-day issues, and create excitement about the school's accomplishments partly by emphasizing the connection of each school activity to learning and instruction. This is not a solo task—it's about identifying supporters. The SD must build a competent management team and an organizational culture which bolsters the work of the academic director and supports development of instructional leaders. This requires the ability to sell hard decisions as well as creation of a positive and transparent structure of accountability based on data and ability to focus on what it takes to achieve an outcome. Strategic and responsive handling of the myriad of reporting and compliance issues is essential to free-up everyone else for academics and student well-being.